

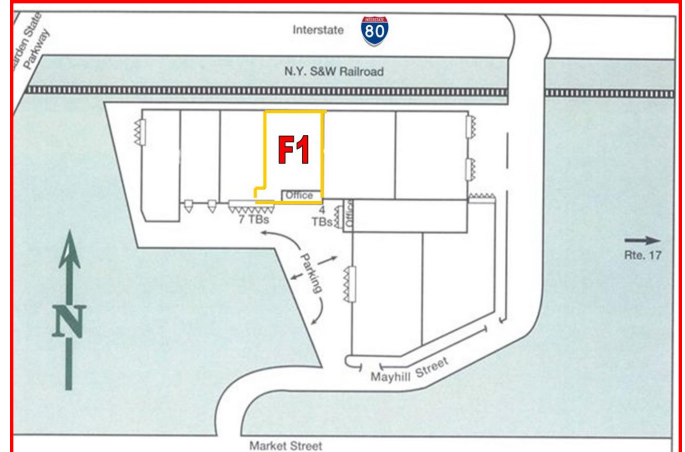
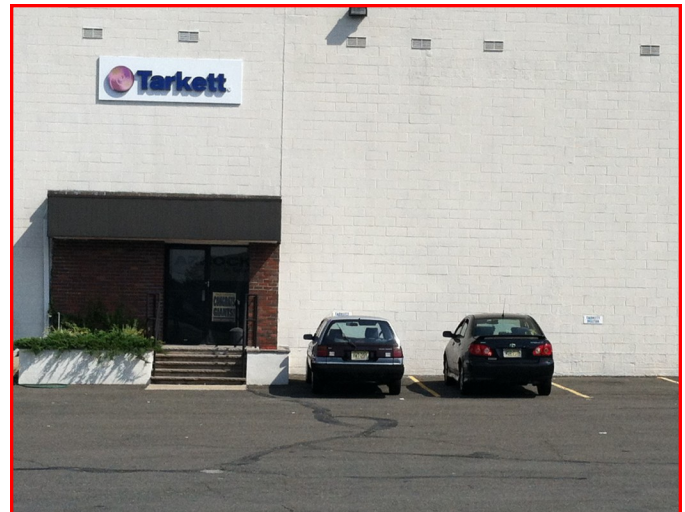


EXCLUSIVE

**95 Mayhill St Unit F1
Saddle Brook, NJ**

**For Lease
46,000 +/- Square Feet**

- Part of 430,000 sq. ft. building
- 2,000 sq. ft. of office space
- 22' clear ceilings
- 3 tailboard doors, 1 drive-in door
- 3 rail doors
- Heavy power
- Column spacing 34.5' x 40'
- Ample parking



**Lease Price: \$7.25 per sq. ft. net
Taxes & CAM: approx. \$2.82 per sq.**

Contact Exclusive Brokers:

Team Resources, Inc. (201) 438-1177

**Eric Lewin x 112 elewin@teamresourcesinc.com mobile (201) 832-4569
Greg Sholom x 106 gsholom@teamresourcesinc.com mobile (201) 755-2628**



**1050 Wall Street West
Lyndhurst, NJ 07071
(201) 438-1177
www.teamresourcesinc.com**

A Commercial/Industrial Real Estate Agency



All information furnished is from sources deemed reliable; however we have not verified it and it is submitted subject to errors, omissions, change of price, prior sale or lease, or withdrawal without any notice. No representation is made as to zoning, physical condition, fire sprinkler adequacy or environmental status of any property and prospective purchasers/tenants are urged to conduct whatever independent investigation they, their attorneys and advisors deem necessary to confirm that a property is suitable for the intended use. Any commissions due cooperating brokers are subject to all terms and conditions upon which we and our clients have agreed.